

BUCKLER'S HARD

Group Visit Guide 2026/7

*Where time flows
differently*



HISTORIC RIVERSIDE VILLAGE

bucklershard.co.uk/groups
New Forest | Hampshire



Welcome to Buckler's Hard



Buckler's Hard is a village on the banks of the Beaulieu River, midway between Beaulieu and the Solent. It was originally planned as a sugar port in the 1720s but actually flourished as a naval shipbuilding centre, providing ships for Nelson's victory at Trafalgar. After 100 years as a shipyard, the village became a sleepy backwater until its charms were discovered by Edwardian tourists. Despite the interruption of two World Wars, in which the river played its part, tourism gave Buckler's Hard a new lease of life. Today, the Museum along with historic cottage displays tell the history of the village from its earliest days to the present time. I hope you enjoy your visit here.

Montagu of Beaulieu

The Village

Take time to amble down the high street and watch the boats sailing by on the Beaulieu River, one of the few privately owned estuaries in the world. Relax by the banks of the river which has been carefully conserved for over four centuries and is rich with wildlife and take a stroll past the orchard, where apple trees are in full blossom in the spring. The fruit is picked each autumn and used with apples from other orchards on the Beaulieu Estate to make Beaulieu Apple Juice.

If you're keen to learn more about the heritage of Buckler's Hard, you can discover the history of the village in the Museum and Visitor Centre or catch a river cruise (Easter - October) along the Beaulieu River.

The Shipwright's Cottage

Step through the door of the reconstructed Shipwright's Cottage to be transported back in time to the 18th century.



St Mary's Chapel

Once a residence and then the village school, a sign and statue provide clues to what really lies behind the door of this Chapel.



Visitor Centre and Museum

Discover the history of this unique 18th century shipbuilding village in the Museum.

Originally founded as a free port for the trading of sugar, Buckler's Hard actually flourished as a naval shipbuilding centre and has become famous for building warships for Nelson's Navy, including three vessels that took part in the Battle of Trafalgar.

For a small charge visit the Museum at the Visitor Centre to discover the fascinating story of the village, its residents, and the ships they built.

Entry prices for the Museum can be found on the [Helpful Information page](#).

The Nelson Connection

Learn how warships were built for Nelson's Navy, including his favourite, *Agamemnon*. See models of the Buckler's Hard ships which took part in the Battle of Trafalgar and view Nelson artefacts.

Historic Cottage Displays

See how villagers would have lived and worked in the early 1800s and compare the cramped home of a labourer's family with the more spacious shipwright's cottage in the village. Plus listen to local gossip in The New Inn...

The War Effort

Learn about activity on the river during WWII, including the important role Buckler's Hard played in the D-Day landings. Be sure to check out a film presentation to discover the story of Buckler's Hard at war.

HMS Agamemnon - Navigating the Legend

HMS Agamemnon was built at Buckler's Hard from 2,000 oaks and launched there in 1781. Don't miss the *HMS Agamemnon - Navigating the Legend* exhibition in the Shipwright workshop.

Shipwright's Gallery

Explore a variety of free exhibitions celebrating the history, wildlife, and heritage of the Beaulieu River and Buckler's Hard. Exhibitions are hosted in the Shipwright's Gallery, opposite the Master Builder's House, with views overlooking the river.



The Buckler's Hard Story Guided Tour

Embark on a journey through maritime history and explore the rich heritage that has shaped this historic village. Your expert guide will lead you down the village high street, sharing tales of shipbuilding, naval prowess, and the lives of those who called Buckler's Hard home.

Discover the art of shipbuilding that fuelled the Royal Navy during the 18th and 19th centuries, as you explore the preserved shipwright's cottage and the master shipbuilder's house. The tour also includes a visit to the Museum, where artefacts, interactive exhibits, and engaging displays bring to life the stories of sailors, merchants, and shipbuilders.

£ on request 1 hour



Combine your visit to Buckler's Hard with a great value joint ticket to include a visit to Beaulieu. See [Helpful Information page](#).

Beaulieu River Cruise

Why not enhance your visit with a relaxing cruise down one of the only privately owned rivers in the world? Between Easter and October, this tranquil cruise wends its way along the Beaulieu River, accompanied by commentary which delves deeper into the history and wildlife that inhabits its picturesque banks.



Sailing times

When booking the River Cruise, please select one of the following sailing times:

11.00, 11.45, 12.45, 13.30, 14.15, 15.00, 15.45, 16.30 The maximum number of passengers is 50.

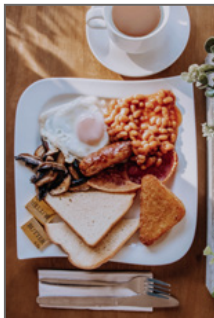
30 mins

Prices for the River Cruise can be found on the Helpful Information page.

The Captain's Table

Enjoy a delicious breakfast, lunch or afternoon tea at The Captain's Table.

We ask that groups pre-book any meals (including afternoon tea) in advance. You can request a menu by emailing groups@bucklershard.co.uk



Gift Shop

Why not treat yourself to a souvenir from your day out at Buckler's Hard. From preserves and sweet treats to nautical and nostalgic memorabilia, there is something for everyone. Be sure to check out the gift shop, which is free to enter, located in the Visitor Centre.



HELPFUL INFORMATION

Buckler's Hard is a peaceful and historic riverside village on the banks of the Beaulieu River with a museum recounting its shipbuilding heritage. Pre-booked groups of 15+ can take advantage of our group rates:

Buckler's Hard Museum

ADULT: £5.00 SENIOR: £4.60 CHILD: £3.55 (4-16yrs)

Buckler's Hard Museum with River Cruise

Easter to October only

ADULT: £11.15 SENIOR: £9.85 CHILD: £8.55 (4-16yrs)

Buckler's Hard Museum PLUS Beaulieu

Visit Buckler's Hard and Beaulieu

ADULT: £24.70 CHILD: £14.00 (4-16yrs)

FREE Coach parking for paying visits. For details email groups@beaulieu.co.uk

Buckler's Hard Museum with River Cruise PLUS Beaulieu

Visit Buckler's Hard and Beaulieu - Easter to October only

ADULT: £29.50 CHILD: £18.80 (4-16yrs)

FREE Coach parking for paying visits. For details email groups@beaulieu.co.uk

Prices correct as of April 2026. Prices are subject to change.

Terms & Conditions: Regrettably, we cannot offer refunds following a cancellation. Beaulieu Enterprises Ltd reserves the right to withdraw or amend the content or time of tours without notice as circumstances dictate. All prices quoted are inclusive of VAT at the prevailing rate. Beaulieu Enterprises Ltd reserves the right to amend gross prices at the time of payment following any subsequent changes in the rate of VAT.

ACCESSIBILITY

Due to the historic nature of Buckler's Hard, some areas are less accessible to visitors with mobility impairments. The site includes gravel pathways, narrow doorways, a steady descent to the riverside and stairs inside the buildings. For further information on accessibility, visit bucklershard.co.uk/plan-your-visit. Please contact us to discuss your needs before you book.



BOOKING

01590 614645
groups@bucklershard.co.uk

John Montagu Building
Beaulieu | New Forest
Hampshire | SO42 7ZN

OPENING TIMES

Open daily from 10am

Average
Visit
2-5
Hours